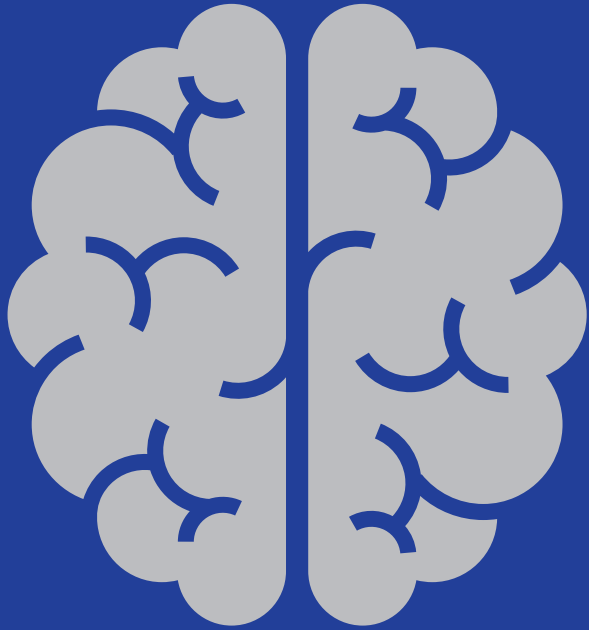


REACTIVE BRAIN VS. READY BRAIN



REACTIVE BRAIN

Fearful & Defensive

- ANXIOUS & INSECURE
- RESTRICTED & OPPOSITIONAL
- FOCUSED ON SURVIVAL
- CLOSED TO NEW OPPORTUNITIES
- PRONE TO PUSHBACK
- RIGID AND REACTIVE
- LIKELY TO ATTACK AND REJECT
& FEEL STUCK IN THEIR OWN EMOTIONS
- FEARFUL OF NEW EXPERIENCES



READY BRAIN

Open & Curious

- CALM & RELAXED
- ADAPTABLE & RESILIENT
- CURIOUS & IMAGINATIVE
- OPEN TO CHALLENGES
- OPEN TO COMPROMISE
- RECEPTIVE & THOUGHTFUL OF OTHERS
- WILLING TO TAKE CHANCES & EXPLORE